

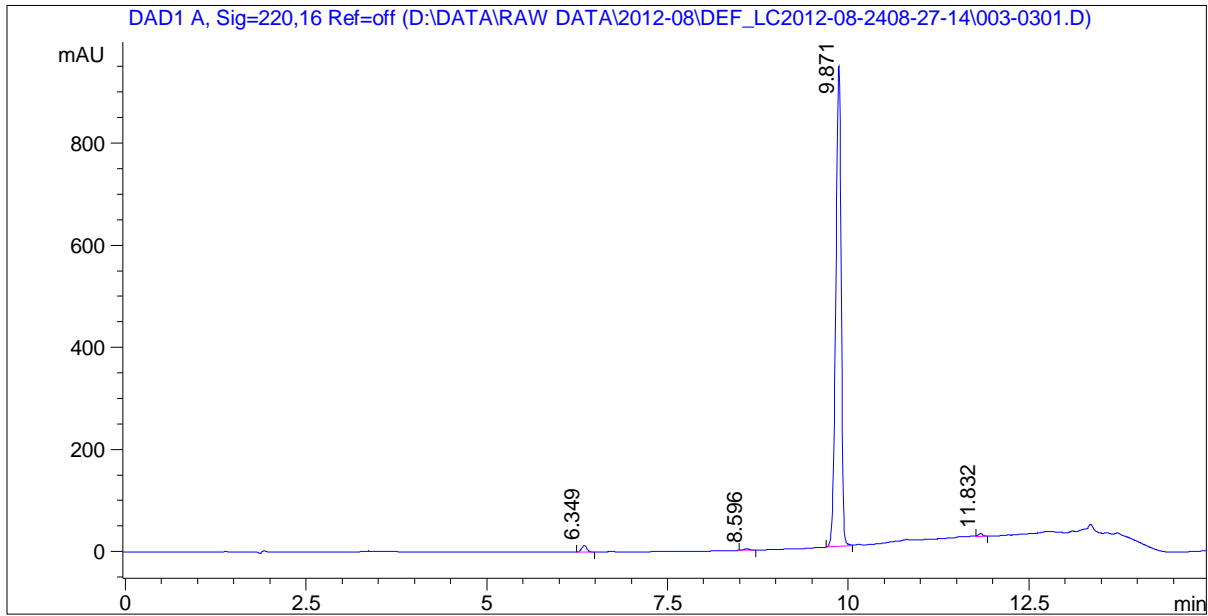
Acq. Operator:

Sample Name : SL-195

```
=====
Injection Date : Fri, 24. Aug. 2012      Seq Line   :          3
Data File      : D:\DATA\RAW DATA\2012-08\  Location    :        Vial 3
                DEF_LC2012-08-2408-27-14\    Inj. No.   :          1
                003-0301.D                   Inj. Vol.  :        1.2 µl
=====
```

```
Acq. Method    : D:\DATA\RAW DATA\2012-08\DEF_LC2012-08-2408-27-14\LC->
Last Changed   : (modified after loading)
Analysis Method: D:\DATA\RAW DATA\2012-08\DEF_LC2012-08-2408-27-14\LC-
                15MIN.M
Last Changed   : Fri, 24. Aug. 2012, 09:24:34 am
                (modified after loading)
Method Info    : Instrument: Agilent 1100HPLC
                Column:C18 4.6*150mm 3.5um
```

Sample Info :



```
=====
                          Area Percent Report
=====
```

Sorted By Signal

```
Calib. Data Modified : Thu, 1. Jan. 1970, 08:00:00 am
Multiplier           : 1.000000
Dilution             : 1.000000
Uncalibrated Peaks   : not reported
```

Acq. Operator:

Sample Name : SL-195

=====  
Signal 1: DAD1 A, Sig=220,16 Ref=off

Peak #	RT [min]	Type	Width [min]	Height	Area	Area %
1	6.349	BB	0.080	1.357	66.862	1.338
2	8.596	BB	0.084	0.285	15.574	0.312
3	9.871	BB	0.080	97.758	4888.332	97.823
4	11.832	BB	0.067	0.600	26.350	0.527

=====  
\*\*\* End of Report \*\*\*